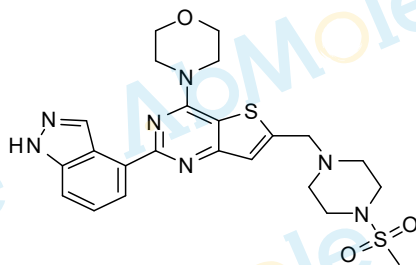


13.215

8.889  
8.236  
8.222  
7.680  
7.664  
7.519  
7.491  
7.476  
7.4604.013  
4.005  
3.995  
3.950  
3.846  
3.836  
3.828  
3.361  
3.164  
2.911  
2.612  
2.509  
2.506  
2.502

-0.000

Chemical Formula: C<sub>23</sub>H<sub>27</sub>N<sub>7</sub>O<sub>3</sub>S<sub>2</sub>  
Molecular Weight: 513.64



CAS: 957054-30-7

DMSO-d<sub>6</sub>, 400 MHz

M1715-GDC-0941 (Pictilisib)-06

1.00

1.00

1.02

1.06  
1.03  
1.024.43  
4.24  
2.074.11  
3.05

4.20

12

10

8

6

4

2

PPM